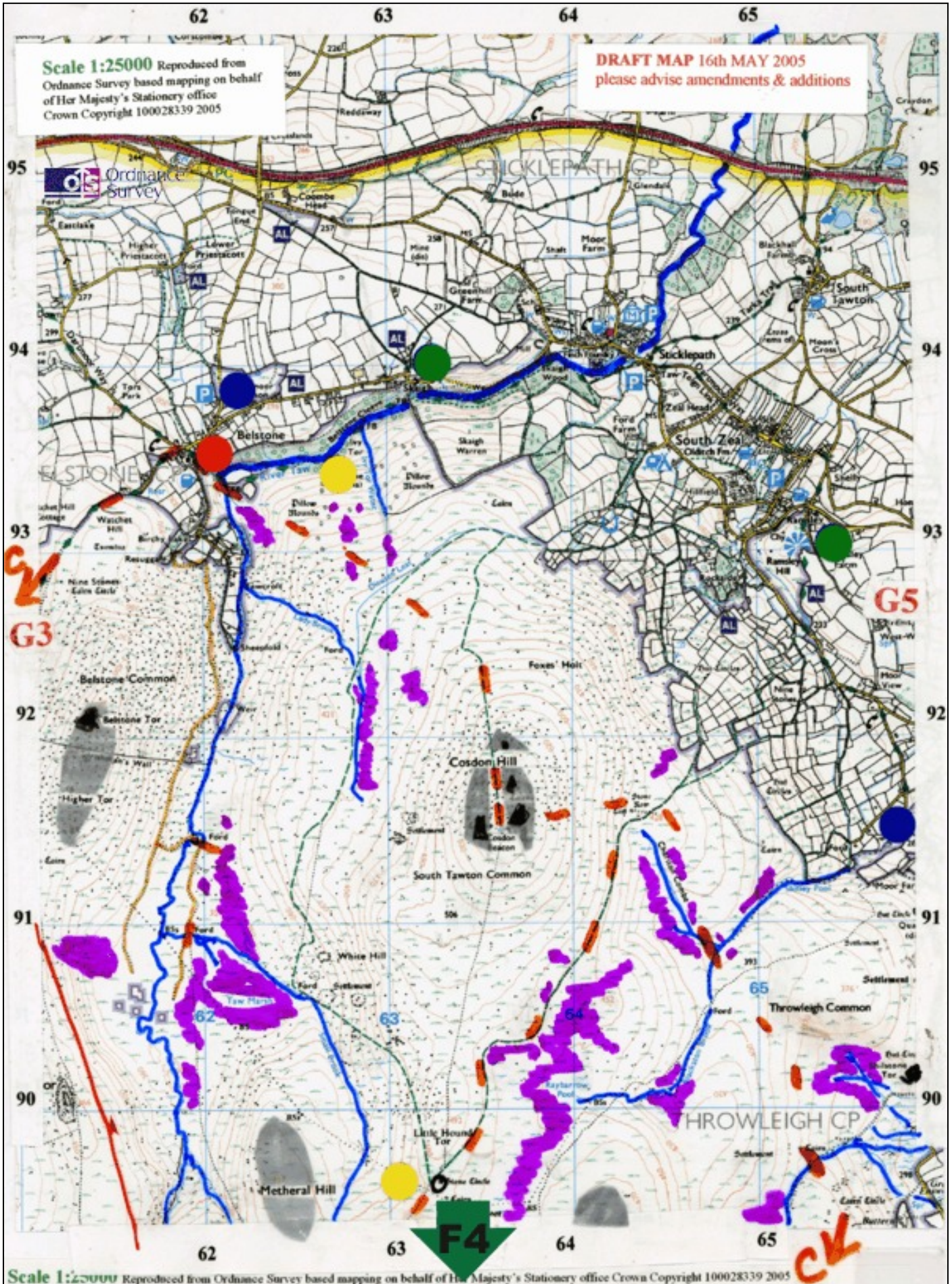


# Horse Riding on Dartmoor: Map G4 Belstone



# Horse Riding on Dartmoor: Map G4 Belstone

BIG TORS, very rocky, great views, Belstone with pub & parking, Army tracks

AVOID:

Army range when firing,

Rocky areas

Bogs

TAKE CARE

ROUTES

C Circular Route is mostly easy to follow, in poor visibility instead of going up Cosdon Hill you can wind your way about 1/2 mile above moor wall to the east.

Other info needed in this area

POINTS OF INTEREST

Big Tors

Views from all the high ground

Easy access from parking areas

Belstone has pub where you can get a drink and then sit in on the green a few yards away.

Riding centres at Skaigh & South Zeal

ACCESS/PARKING

Reasonably easy access via road to Belstone where there is a good parking area just north of the village. From east driving down reasonable lane from Stickepath and parking just north of Moor farm known locally as Paines Bridge 658 913.

LOST?

Generally go NORTH